



# ND Healthy Return to Learning

## **SMART SCHOOL RESPONSE GUIDANCE**

Version 1.0 August 21, 2020

# Contents

- Definitions and Abbreviations ..... 3
  - Definitions ..... 3
  - Abbreviations ..... 4
- Introduction to the North Dakota Healthy Return to Learning Team..... 5
  - Coordinated Effort Across Agencies and Teams ..... 6
  - ND Healthy Return To Learning Team..... 7
  - NDDOH K-12 School Response Team..... 7
  - NDDPI K-12 School Response Team..... 7
- School COVID Point of Contact Collaboration..... 9
  - NDDoH K-12 School COVID Coordinators ..... 10
- Testing and Notification ..... 11
  - Testing ..... 11
- Identification of School Positive Cases ..... 12
  - When an Individual Tests Positive for COVID-19 ..... 12
- Close Contact Tracing..... 13
  - School Close contacts ..... 15
  - Return to School for Individual Testing Positive..... 15
- LPH Decision-Making Protocol to Assist School Districts ..... 16
- Reasonable Communication Between LPH and Schools..... 19
  - HIPAA ..... 19
  - FERPA - Family Educational Rights and Privacy ..... 19
  - Disease Control Records..... 20
- School District POC ..... 21
- Local Public Health POC ..... 27
- Supporting Resources ..... 35
  - DOH ..... 35
  - DPI ..... 35

# Definitions and Abbreviations

## Definitions

**CASE INVESTIGATION** - When the NDDoH or other public health partner interviews someone who has COVID-19 to determine where or by whom the individual may have gotten infected, understand symptoms, obtain demographics and underlying health conditions, and to identify close contacts.

**CLINICALLY DIAGNOSED** - When a person is diagnosed with a disease by their health care provider based on symptoms and risk factors, but they do not have a laboratory test to confirm the diagnosis.

**CLOSE CONTACT** - Being within 6 feet of a COVID-19 case for a prolonged period of time (greater than 15 minutes). A close contact would also be someone who was directly coughed or sneezed on or a health care worker who was not wearing appropriate personal protective equipment.

**COMMUNITY MITIGATION** - Actions that people and communities can take to help slow the spread of viruses, including seasonal and pandemic influenza.

**CONTACT TRACING** - People in close contact with someone who is infected with a virus, such as COVID-19, are at higher risk of becoming infected themselves, and of potentially further infecting others. The NDDoH and other public health partners follow-up with close contacts of COVID-19 cases to notify them of their exposure, check for symptoms/signs of infection, and advise them of their quarantine period.

**FLATTEN THE CURVE** - Flattening the curve refers to taking protective actions, often called community mitigation measures, that help slow the spread of a disease so the health care system does not get overwhelmed by having a lot of very sick people all at once. The protective actions can be things like canceling large gatherings, keeping space between people (called social distancing), and continuing to do things like washing hands, covering coughs, and staying home when sick.

**HIGH-RISK** - Those considered high-risk include older people or those with certain underlying health conditions. These include blood disorders, chronic kidney disease, chronic liver disease, a compromised immune system, late term or recent pregnancy, endocrine disorders, metabolic disorders, heart disease, lung disease, and neurological conditions. Check with your health care provider to see if you are considered high-risk.

**ISOLATION** - When a person who is showing symptoms of a disease separates themselves from other people to prevent spreading the disease to others. People who test positive for COVID-19 have to be isolated for at least 10 days after symptom onset and be fever free for 24 hours (without the use of medications) and have improvement in symptoms. People who are immunocompromised, hospitalized or health care workers may need to be isolated longer.

**LAB-CONFIRMED CASE** - When a person is diagnosed with a disease that is confirmed through having specimens (samples) tested in a laboratory.

**MONITORING** - When an individual checks his/her temperature twice per day and watches for symptoms of COVID-19. Self-monitoring should be conducted by everyone in North Dakota but is especially important for travelers from high-risk areas and essential workers. Active monitoring is when the NDDoH or other public health partner is calling a case or contact each day to check on his/her temperatures and symptoms.

**PANDEMIC** - A global outbreak of disease. Pandemics happen when a new virus emerges to infect people and can spread easily between people.

**QUARANTINE** - When a person who was exposed to a disease but does not have symptoms separates themselves from others for a period of time to prevent potentially spreading the disease to others. The quarantine period for COVID-19 is 14 days from the last time an individual was exposed to a case while the case was contagious.

**SOCIAL DISTANCING OR PHYSICAL DISTANCING** - When individuals voluntarily choose to stay home versus going out in public. This means keeping at least six feet between you and other people. Do not gather in small, crowded areas. If it's not an essential gathering, consider postponing or gathering virtually. Check local guidelines for recommendations.

**SUSPECTED CASE** - A person who may have a disease because of their symptoms and risk factors based on current guidelines, but this person was not tested.

## Abbreviations

**NDDoH** – Department of Health

**NDDPI** – Department of Public Instruction

**LPH** - Local Public Health

**SCC** – DoH School COVID Coordinators

**POC** – Point of Contact

**LEA** – Local Education Agency

## Introduction to the North Dakota Healthy Return to Learning Team

The ND Healthy Return to Learning team is a diverse team of subject matter experts collaborating with state agencies and communities to provide resources, processes, and strategies that schools, local public health and the state need to keep schools operating in their dual mission of high quality education for all students while ensuring public health.

Subject matter experts include a local physician experienced in infectious disease, a local public health administrator, and an experienced K-12 school administrator being supported by the NDDPI and NDDoH.

The objective of this team is to ensure communication, preparation, and response activities are timely and effective. The goal is to protect students and staff from the virus so that educators can provide high quality service to all students.

We are fortunate to have skilled school administrators and health providers across the state who work in their capacity to optimize students return to school in a safe way. As the situation with COVID-19 evolves, we know there will be situations our education system has never experienced before. The ND Healthy Return to Learning team was created to help schools and local public health through these experiences.

The ND Healthy Return to Learning team has created a concise playbook and accompanying tools for schools and local public health to utilize as they work through the diverse scenarios they will encounter this school year.

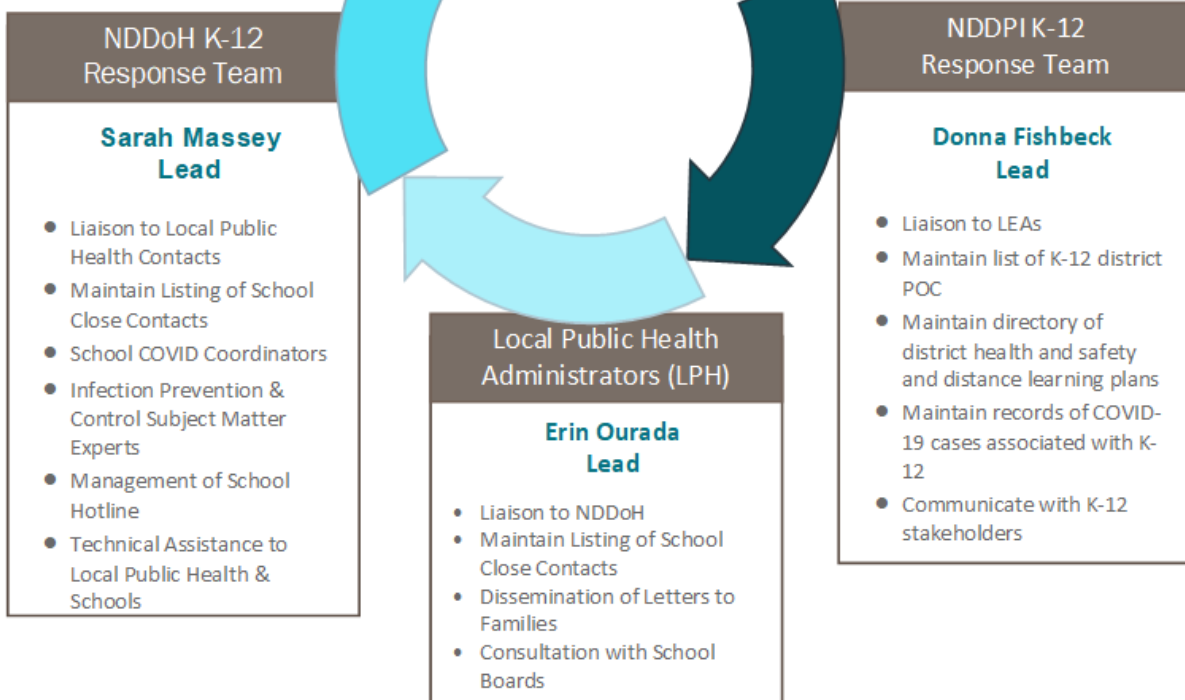
### Responsibilities

- Serve as Key Resource to School and LPH Administration
- Coordinate Across State & Regional Supports
- Support State Health & Education Officials
- Respond to Health and Epidemiology Questions as they relate to K-12 settings
- Facilitate Connections with NDDoH, LPH, NDDPI & LEA
- Implement and Refine ND Healthy Return to Learning Smart School Response Guidance

# Coordinated Effort Across Agencies and Teams

| ND Healthy Return to Learning Team            |  |   |
|---|--|---|
| Guy Tangedahl, MD, Infectious Disease Lead    | Keith Johnson, Local Public Health & Tribal Lead | Frances Rodenburg, EdD, K-12 Lead           |
| Joan Connell, MD, NDDoH Field Medical Officer | Chris Jones                                      | Kirsten Baesler, NDDPI State Superintendent |
| Sarah Massey, NDDoH School Health Specialist  | Erin Ourada, Local Public Health, Custer         | Donna Fishbeck, PhD, NDDPI Chief of Staff   |

- Serve as Key Resource to School and LPH Administration
- Coordinate Across State & Regional Supports
- Support State Health & Education Officials
- Respond to Health and Epidemiology Questions as they relate to K-12 settings
- Facilitate Connections with NDDoH, LPH, NDDPI & LEA
- Implement and Refine ND Healthy Return to Learning Smart School Response Guidance



## ND Healthy Return To Learning Team

### GOVERNOR'S OFFICE POINT OF CONTACT: CHRIS JONES

- Guy Tangedahl, MD, Infectious Disease Lead [gtangedahl@nd.gov](mailto:gtangedahl@nd.gov)
- Keith Johnson, Local Public Health Lead [keithjohnson@nd.gov](mailto:keithjohnson@nd.gov)
- Fran Rodenburg, EdD, K-12 Lead [farodenburg@nd.gov](mailto:farodenburg@nd.gov)
- Joan Connell, MD, NDDoH Field Medical Officer [jconnell@nd.gov](mailto:jconnell@nd.gov)
- Chris Jones, Executive Director, NDDHS [cdjones@nd.gov](mailto:cdjones@nd.gov)
- Kirsten Baesler, State Superintendent [kbaesler@nd.gov](mailto:kbaesler@nd.gov)
- Sarah Massey, School Health Specialist [smassey@nd.gov](mailto:smassey@nd.gov)
- Erin Ourada, Local Public Health, Custer District [erin.ourada@custerhealth.com](mailto:erin.ourada@custerhealth.com)
- Donna Fishbeck, PhD, Chief of Staff, NDDPI [dfishbeck@nd.gov](mailto:dfishbeck@nd.gov)
- Tara Brandner, NDAG [tbrandner@nd.gov](mailto:tbrandner@nd.gov)
- Leslie Percy, Project Manager [lpercy@nexusinnovations.com](mailto:lpercy@nexusinnovations.com)

## NDDOH K-12 School Response Team

### TEAM LEAD: SARAH MASSEY

- Sarah Massey, School Health Specialist [smassey@nd.gov](mailto:smassey@nd.gov)
- Krissie Guerard, Health Equity Directory [kguerard@nd.gov](mailto:kguerard@nd.gov)
- Dr. Joan Connell, MD, Field Medical Officer [jconnell@nd.gov](mailto:jconnell@nd.gov)
- Heather Kapella, State School Nurse Consultant [hkapella@nd.gov](mailto:hkapella@nd.gov)
- Jaime Conmy, Special Health Services [jconmy@nd.gov](mailto:jconmy@nd.gov)
- Kimberly Hruby, Special Health Services Division Director [krhruby@nd.gov](mailto:krhruby@nd.gov)
- Amy Burke, MCH Nurse Consultant [arburke@nd.gov](mailto:arburke@nd.gov)
- Mandy Slag, Director, Injury Prevention Program [mblad@nd.gov](mailto:mblad@nd.gov)
- Susan Mormann, Director, Community & Health System [smormann@nd.gov](mailto:smormann@nd.gov)
- Kara Hickel, Health Communications & Equity Specialist [khickel@nd.gov](mailto:khickel@nd.gov)
- Kim Mertz, Section Chief, Healthy & Safe Communities [kmertz@nd.gov](mailto:kmertz@nd.gov)

## NDDPI K-12 School Response Team

### TEAM LEAD: LEAD: DONNA FISHBECK

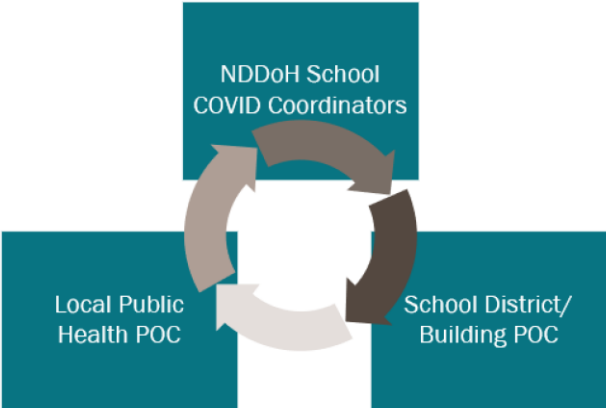
- Kirsten Baesler, State Superintendent [kbaesler@nd.gov](mailto:kbaesler@nd.gov)
- Dr. Donna Fishbeck, Chief of Staff [dfishbeck@nd.gov](mailto:dfishbeck@nd.gov)
- Laurie Matzke, Assistant Superintendent [lmatzke@nd.gov](mailto:lmatzke@nd.gov)
- Joe Kolosky, Director, School Approval and Opportunity [jkolosky@nd.gov](mailto:jkolosky@nd.gov)
- Ann Ellefson, Director, Academic Support [aelfelson@nd.gov](mailto:aelfelson@nd.gov)

- Amanda Peterson, Director, Educational Equity and Support [amandapeterson@nd.gov](mailto:amandapeterson@nd.gov)
- Ross Roemmich, Director, Management Information Systems [rkroemmich@nd.gov](mailto:rkroemmich@nd.gov)
- Dale Wetzel, Public Information Specialist [dewetzel@nd.gov](mailto:dewetzel@nd.gov)
- Jennifer Anderson, Communications Specialist [jemanderson@nd.gov](mailto:jemanderson@nd.gov)
- Stacey Poffenberger, Business Communications Specialist [sjpoffenberger@nd.gov](mailto:sjpoffenberger@nd.gov)
- Jill Frohlich, Management Information Systems Staff Officer [jmfrohlich@nd.gov](mailto:jmfrohlich@nd.gov)
- Patty Carmichael, Executive Assistant [pcarmichael@nd.gov](mailto:pcarmichael@nd.gov)
- Lisa Johnson, Program Manager [lisaajohnson@nd.gov](mailto:lisaajohnson@nd.gov)
- Larry Regorrah, ND Department of Emergency Services [lregorrah@nd.gov](mailto:lregorrah@nd.gov)



# School COVID Point of Contact Collaboration

To help slow the spread of COVID-19, public health and schools can work together to notify students, parents, staff members, and volunteers when an exposure to COVID-19 has occurred at school.



## Before the 2020-2021 School Year

- Tasks Prior to School Opening:**
- District and building POC for each school identified
  - Provide contact information for each district POC to the NDDoH/LPH

- School district POCs have been designated to work with the NDDoH and/or LPHU when a student or staff member tests positive for COVID-19.
- Contact lists for NDDoH K-12 School COVID Coordinators and Local Public Health POC have been provided to schools.
- A list with contact information for each School District POC has been provided to the NDDoH/LPH, by the NDDPI.

# NDDoH K-12 School COVID Coordinators

## NDDoH POINT OF CONTACT-SARAH MASSEY, SCHOOL HEALTH SPECIALIST, [SMASSEY@ND.GOV](mailto:SMASSEY@ND.GOV)

K-12 school affiliated positive cases are identified by Case Manager/Case Worker who will contact the NDDoH SCC team. SCC members will work on a rotating schedule with a designated lead on each shift.

### School COVID Coordinators (SCC)

- Sarah Massey
- Krissie Guerard
- Jaime Conmy
- Kimberly Hruby
- Amy Burke,
- Mandy Slag
- Heather Kapella
- Susan Mormann
- Kara Hickel
- Valerie Fischer
- Keith Johnson
- Debra Huber
- Sonja Mahlum
- Molly Murch
- Barbara Andrist
- Jorden Laducer
- Kasi Eisenzimmer

### Duties

- **SCC** will notify LPH of positive cases in their schools and LPH assists the school with compiling school close contacts.
  - If LPH has reached capacity, the **SCC** will step in to work with district/building POCs to identify the school close contacts.
  - Schools will disseminate [school close contact template letter](#).
  - LPH/NDDoH will provide the appropriate quarantine dates for the school close contact letters.
- Both the NDDoH SCCs and LPH will keep a shared Excel Sheet of the Positive Cases information and enter cases Critical and Time-Sensitive Elements in Dynamics 365.
- Answer the school hotline calls **(888) 788-2510**. This hotline is only for school and LPH use. This number should not be shared with the public.
- Monitor the DOH-Info Account, [Dohcovid\\_school@nd.gov](mailto:Dohcovid_school@nd.gov), for school letters.

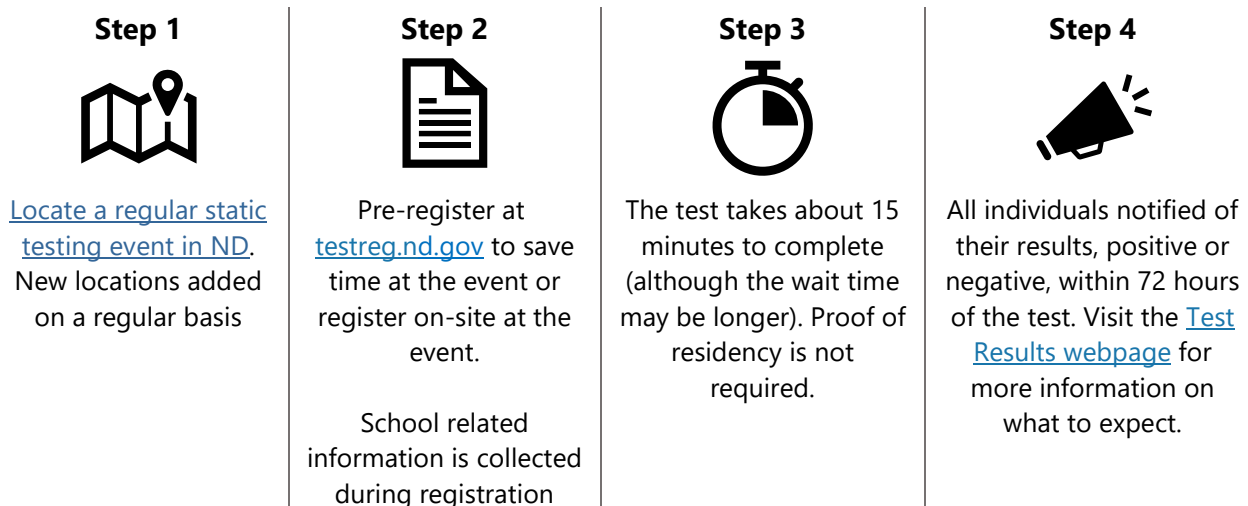
## Testing and Notification

### Testing

Symptomatic people should be tested. The NDDoH recommends students or school faculty who identified as a close contact wait 7-10 days after last date of exposure to get tested. It is especially important school close contacts to be tested, as children are more likely to have asymptomatic infection and may spread COVID-19 to others. Regardless of symptoms, close contacts should be tested 7-10 days after exposure.

If there is an outbreak or large cluster in a school setting, local public health units may establish a testing event at the school. Parents and school employees will be notified of school-located testing events, if scheduled.

#### THE NDDoH FOLLOWS THE CDC SCHOOL TESTING RECOMMENDATIONS



#### What is universal testing and does CDC recommend it for students and staff?

Universal testing refers to testing all students and staff in school settings for COVID-19, regardless of whether they are showing symptoms or have a known exposure to someone with COVID-19.

[CDC does not recommend universal testing](#) of all students and staff for the following reasons:

- [Viral testing](#) only provides COVID-19 status for individuals at the time of testing.
- One-time or universal entry testing could miss COVID-19 cases in the early stages of infection, and it could miss exposures that happen after testing.
- Implementing a universal approach to testing in schools may pose challenges, such as the lack of infrastructure to support routine testing and follow up in the school setting; unknown acceptability of this testing approach among students, parents, and staff; lack of dedicated resources; practical considerations related to testing minors; and potential disruption in the educational environment.

## Identification of School Positive Cases

During any static testing pre-registration, onsite registration or onsite check-in, questions are asked regarding school affiliation (student, teacher, administrator, etc.) and school. This information is utilized to quickly identify a school case when a positive test result enters the system.

A school may be notified of a positive case prior to a LPHU. In this case, the school should call the NDDoH school hotline (888) 788-2510.

## When an Individual Tests Positive for COVID-19

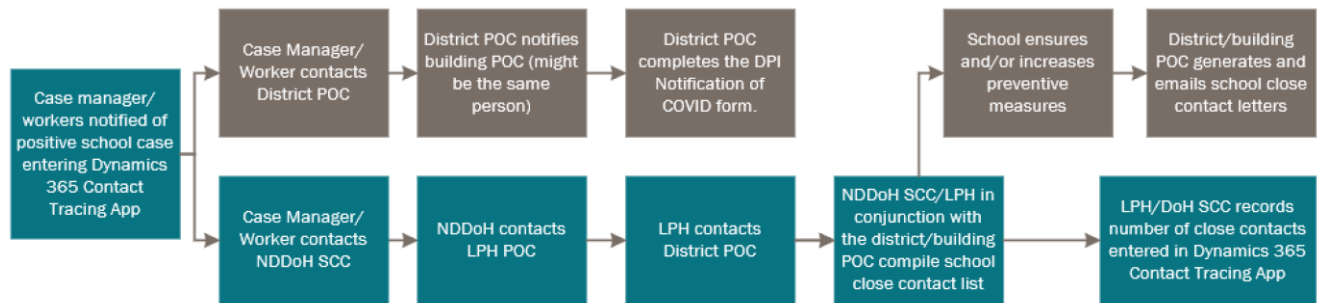
### NDDoH Disease Control Conducts Case Investigation

- NDDoH/LPH advises case to isolate.
- NDDoH/LPH advises personal/household contacts to quarantine.

- The NDDoH Disease Control will contact the positive individual (case) and conduct a disease investigation, which includes beginning the contact tracing process to identify others who may have been exposed to COVID-19.
- The **case** will be instructed to isolate and cannot return to school until meeting the [Centers for Disease Control and Prevention \(CDC\) criteria](#) to be released.
- Those who are identified as a **Close Contact** (being within 6 feet for 15 minutes total or more) will be advised to [quarantine](#) and should quarantine for 14 days from their last exposure to the case.
- Those who are **Household Contacts** should be quarantined for 14 days after their last exposure. Because they have ongoing exposure, the 14 days does not start until after the case is released from isolation.
- Quarantined Contacts including students, staff members, or volunteers should not return to school until they have completed their full quarantine period, even if receiving a negative test result during their quarantine period.

## Close Contact Tracing

The case investigation and contact tracing is a collaborative effort between NDDoH, LPH and school district/building POCs, each doing their part to ensure response activities are timely and effective while ensuring personal health information is protected and only accessible to those who require it to make informed public health decisions. The high-level process below describes this collaboration.



### District-designated POC Notified

NDDoH/LPH Notifies District/Building POC of Case/Contacts

- If an individual with COVID-19 attended/worked at a school within 48 hours of symptoms starting (if symptomatic) or of being tested (if asymptomatic), the NDDoH or LPH will contact the district/building POC to notify of case(s) and other school-related contacts (i.e., siblings attending the same school) who have been quarantined in the same household.
- Schools may be notified of cases prior to public health. If that occurs, schools should immediately notify the NDDoH hotline (888) 788-2510 or their LPH POC.

### District/Building POC and LPH Identifies School Close Contacts

District/Building POC Compiles List of School Close Contacts

- The NDDoH/LPH will advise the district/building POC on determining a school close contact and assist the district/building POC in compiling a list of individuals who may have been exposed at the school.
  - The NDDoH has [guidance](#) regarding who are potential school close contacts.
- District/building POC should maintain a list of close contacts that includes contact name, date of birth, grade/classroom, parent/guardian name, parent cell phone number, and parent email address.

## District/Building POC Notifies Students/Staff Through Letter

District/Building POC  
Sends Informational  
Letter to All  
Individuals Identified  
as School Close  
Contacts

- After identifying others who were potentially exposed to COVID-19 (school close contacts), the district/building POC, with assistance from NDDoH/LPH should complete and send the [school close contact template letter](#) provided from the NDDoH/LPH.
- All school close contacts receiving the letter should [quarantine](#) and self-monitor (pay attention to how they are feeling). If they are or become ill, they should contact a healthcare provider. It is recommended close contacts get tested for COVID-19 about 7-10 days after being exposed.
- Schools may also choose to notify staff and parents of children who were not identified as close contacts. A [not a close contact template](#) letter provided from the NDDoH/LPH may be used.

## School Ensures and/or Increases Preventative Measures

School  
Ensures/Increases  
Preventative Measures  
to Slow the Spread of  
COVID-19 Following  
Individual School's Plan

- The NDDPI/LPH/NDDoH POC works with the school administration to ensure preventative measures are followed or increased, according to the school's plan.
- The NDDPI/LPH/NDDoH will provide any additional recommendations to the district/building POC to reduce the spread of COVID-19 in the school, if needed.

## NDDoH Disease Control Conducts Additional Investigation(s) as Needed

NDDoH Disease  
Control will Conduct  
Additional Case  
Investigation(s)

- The NDDoH/LPH will conduct additional investigations with anyone who later tests positive for COVID-19 and repeat the same processes.

## School Close contacts

Contacts Quarantine,  
Self-Monitor for  
Symptoms  
& Get Tested for  
COVID-19

- Should [quarantine](#) (stay home) according to CDC guidance. Quarantine is recommended for 14 calendar days after being exposed to a positive case.
- Should self-monitor for symptoms of COVID-19.
- Should contact a healthcare provider and get tested if they are or become symptomatic.
- Regardless of symptoms, should be tested 7-10 days after exposure. **Even if test results are negative, the quarantine period must be completed.**

## Return to School for Individual Testing Positive

NDDoH Disease Control  
Monitors Case and  
Determines Return to  
School

- The NDDoH/LPH will monitor the case and release from isolation once [CDC criteria](#) has been met.
- The case can safely return to school after being released from isolation by the NDDoH/LPH.

# LPH Decision-Making Protocol to Assist School Districts

District representatives should contact local public health units for guidance, as needed. School and district action teams should be formed to serve as the initial response command unit should a positive case of COVID-19 be identified within a school community. The action teams will collaborate with local public health to ensure coordinated response and communication efforts.

## County Transmission Level and Reasonable Parameters

The most current county transmission level calculations will be distributed weekly to LPH until the time at which the NDDoH website's [COVID-19 dashboard](#) can be updated to include the calculation below

See the next two pages for a diagram to use in decision-making. County transmission levels are calculated using the equation below:

$$\text{Total number of cases for last 14 days} \div \left( \frac{\text{County Population}}{10,000} \right) = \text{14-day county case level rate per 10,000}$$



# LPH Decision-Making Protocol to Assist School Districts

## County Transmissions Level

$$\left( \frac{\text{Total number of cases for last 14 days}}{\left( \frac{\text{County Population}}{10,000} \right)} \right) = \text{14-day county case level rate per 10,000}$$

## Reasonable Parameters

0-49

50+

For EVERY identified case associated with K-12

Has individual been in the **BUILDING** or at school activities since 48h prior to onset of symptoms?

YES

NO

**Close the IMPACTED CLASSROOM(s) 24h** for cleaning; & until close contact has been identified

- Exclude close contacts from the building for at least 14d\*
- Reinforce prevention measures

**Close the IMPACTED CLASSROOM(s) 24h** for cleaning; & until close contact has been identified

- Exclude close contacts from the building for at least 14d\*
- Reinforce prevention measures

**Reopen CLASSROOM(s)**

- Restrict schoolwide events, extracurricular activities & public gatherings

**Reopen CLASSROOM(s)**

- No schoolwide events, extracurricular activities & public gatherings
- Reduce students staff present at the same time during school hours

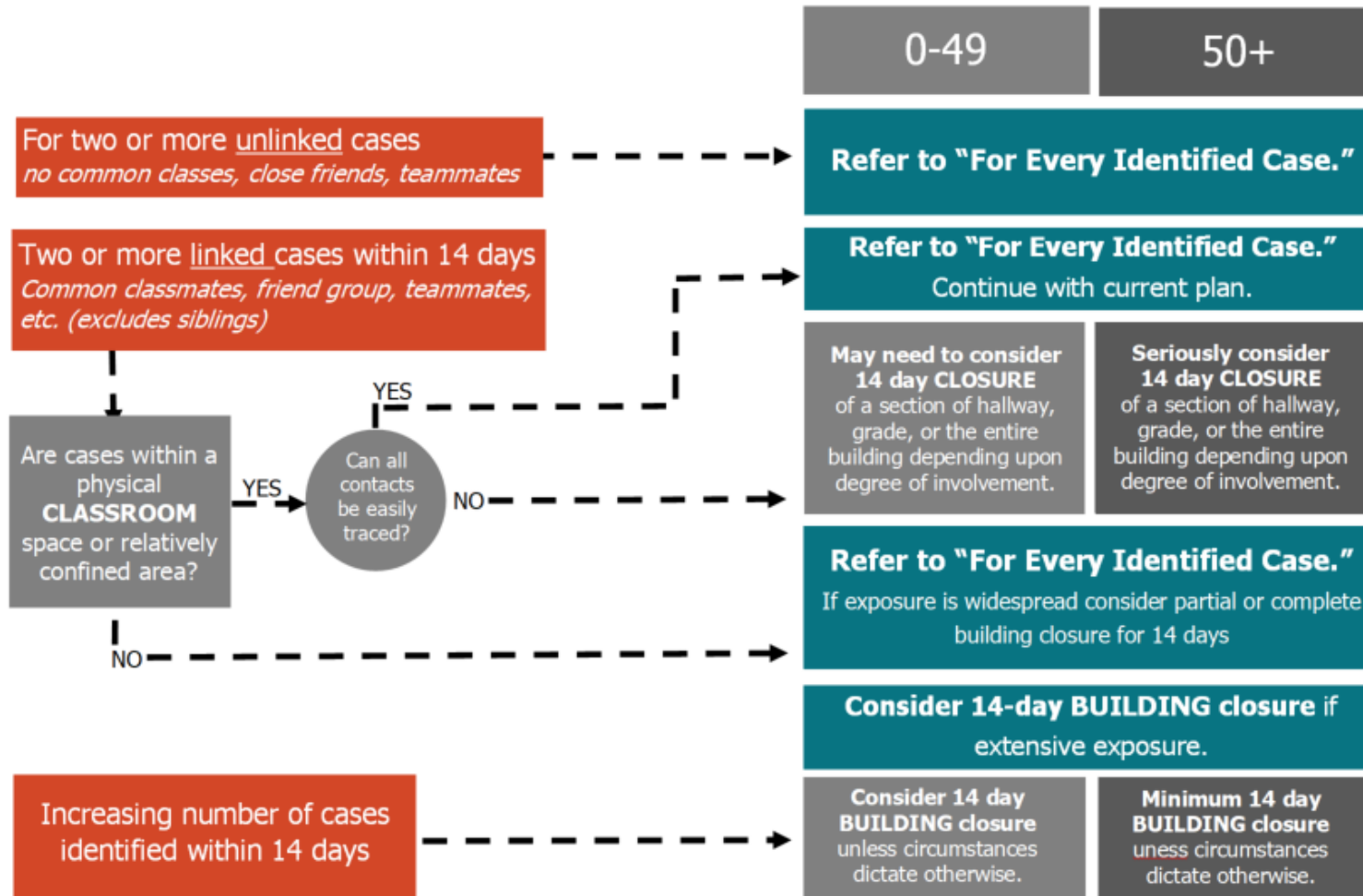
**District contacts local health dept to assist with tracing contacts.**  
Ensure close contacts do not return to the building for 14 days from the last exposure.

Outside of state, county, or local executive order, district-wide closures should occur under only the most extreme circumstances. The use of "percent active cases" as a sole determinant of district-wide closure is strongly discouraged. Every effort should be made to make school-level decisions that allow schools that are not impacted by active cases to conduct in-person instruction at some level. District administrators are strongly encouraged to include local, regional, and/or state public health officials in any discussions regarding district closure.

\* Dependent upon family/household exposure

# LPH Decision-Making Protocol to Assist School Districts

## County Transmissions Level Reasonable Parameters



Outside of state, county, or local executive order, district-wide closures should occur under only the most extreme circumstances. The use of "percent active cases" as a sole determinant of district-wide closure is strongly discouraged. Every effort should be made to make school-level decisions that allow schools that are not impacted by active cases to conduct in-person instruction at some level. District administrators are strongly encouraged to include local, regional, and/or state public health officials in any discussions regarding district closure.

## Reasonable Communication Between LPH and Schools

### **HIPAA**

The Office of Civil Rights (OCR) issued guidance on how covered entities may disclose protected health information (PHI) about an individual who has been infected with or exposed to COVID-19 to public health authorities and other first responders in compliance with the HIPAA Privacy Rule. Covered entities include medical providers who are reimbursed by Medicare and Medicaid.

Circumstances under which a covered entity may disclose PHI such as the name or other identifying information about individuals, without their HIPAA authorization, includes:

- When first responders may be at risk of an infection;
- When disclosure is necessary to prevent or lessen a serious and imminent threat;
- When needed to provide treatment; and
- When required by law.

Covered entities must make reasonable efforts to limit the PHI disclosed to that which is the “minimum necessary” to accomplish the purpose of disclosure.

HIPAA, the federal privacy law, only applies to medical providers releasing identifying information. Standing guidance from the US Department of Health and Human Services says that HIPAA does not apply to elementary and secondary schools.

See [US Department of Health and Human Services](#) for more information.

### **FERPA - Family Educational Rights and Privacy**

Schools can share information about students while protecting their privacy during a public health emergency, such as a pandemic. FERPA does not apply when schools disclose that a student may have COVID-19 as long as the school does not directly or indirectly identify that student. Schools should only disclose the minimum amount of information required to address the issue at hand.

See the [Department of Education FAQ's regarding FERPA, Student Privacy and COVID-19](#) for more information.

## Disease Control Records

Information contained in disease control records is strictly confidential. N.D.C.C. § 23-07-20.1 and N.D.A.C. 33-06-03-04. Information contained in disease control records includes:

All information, records of interviews, written reports, statements, notes, memoranda, or other data procured by the department in connection with disease control, or carried on by the department jointly with other persons, agencies, or organizations, or procured by such other persons, agencies, or organizations, for the purpose of disease control or for such purposes of reducing the morbidity or mortality from any cause or condition of health.

Records related to the 2019-nCoV/COVID-19 pandemic that an entity receives from the Department of Health, or Local Public Health, are disease control records.

The Department *may* release disease control records related to the 2019-nCoV/COVID-19 pandemic as otherwise provided by statute. See N.D.A.C. 33-06-03-04(5). Pursuant to N.D.C.C. 23-01.3-07, the Department *may* disclose confidential information or protected health information to a health care provider or the public if disclosure of the information is required to prevent the spread of disease, identify the cause or source of disease, or allay fear and aid the public in understanding the risk of its exposure to disease.

The Department has determined that disclosure of specific disease control records related to the 2019-nCoV/COVID-19 pandemic is necessary in order to prevent the spread, identify the cause or source, and allay fear and aid the public in understanding the risk of its exposure to 2019-nCoV/COVID-19.

Pursuant to N.D.C.C. § 44-04-18.10(5), confidential records that are authorized by law to be disclosed to another entity continue to be confidential in the possession of the receiving entity, except as otherwise provided by law. As a result, an entity that receives disease control records related to the 2019-nCoV/COVID-19 pandemic must maintain the confidentiality of the records and limit disclosure as is necessary to carry out its duties related to responding to the 2019-nCoV/COVID-19 pandemic. Such disclosure must be limited to those employees or agents where the disclosure is necessary to assist with case investigations and contact tracing related to 2019-nCoV/COVID-19.

**Any unauthorized disclosure of disease control records related to the 2019-nCoV/COVID-19 pandemic is a criminal violation and is a Class C Felony.**

## School District POC

The school district POC is available on a 24-hour emergency basis. POC contact information is **not** to be shared with the public. It is solely for use by LPH, NDDoH, and NDDPI Instruction Leadership Team as a single point of contact for efficient communication.

| District Name                | Contact Name      | Contact Email                        | Contact Phone |
|------------------------------|-------------------|--------------------------------------|---------------|
| <b>Alexander 2</b>           | Leslie Bieber     | Leslie.Bieber@k12.nd.us              | 701-570-8797  |
| <b>Anamoose 14</b>           | Steven Heim       | Steven.heim@k12.nd.us                | 701-889-2047  |
| <b>Apple Creek 39</b>        | Cori Hilzendeger  | cori.hilzendeger@k12.nd.us           | 701-226-1708  |
| <b>Ashley 9</b>              | Jason Schmidt     | jason.schmidt@k12.nd.us              | 701-338-2022  |
| <b>Bakker 10</b>             | Joy Dykema        | joybuzzer2000@yahoo.com              | 701-336-7845  |
| <b>Barnes County North 7</b> | Michael Severson  | michael.severson@k12.nd.us           | 701-214-7958  |
| <b>Beach 3</b>               | Taryn Sveet       | taryn.sveet@k12.nd.us                | 701-739-1878  |
| <b>Belcourt 7</b>            | Marilyn Laducer   | marilyn.laducer@belcourt.k12.nd.us   | 701-278-0075  |
| <b>Belfield 13</b>           | Daren Kurle       | daren.kurle@k12.nd.us                | 701-426-4767  |
| <b>Beulah 27</b>             | Travis Jordan     | travis.jordan@k12.nd.us              | 701-873-2237  |
| <b>Billings Co 1</b>         | Danielle O'Brien  | danielle.obrien@k12.nd.us            | 701-290-2229  |
| <b>Bismarck 1</b>            | Jason Hornbacher  | jason_hornbacher@bismarckschools.org | 701-527-4622  |
| <b>Bottineau 1</b>           | Kelly Olson       | kelly.olson1@k12.nd.us               | 701-201-2560  |
| <b>Bowbells 14</b>           | Celeste Thingvold | celeste.thingvold@k12.nd.us          | 701-377-2397  |
| <b>Bowman Co 1</b>           | Wayne Heckaman    | Wayne.Heckaman@k12.nd.us             | 701-590-4832  |
| <b>Burke Central 36</b>      | Ricky Lindblad    | rick.lindblad@k12.nd.us              | 575-315-5014  |
| <b>Carrington 49</b>         | Kris Kuehn        | Kris.Kuehn@k12.nd.us                 | 406-654-7076  |
| <b>Cavalier 6</b>            | Jeff Manley       | jeff.manley@cavalierk12.org          | 701-265-8417  |
| <b>Center-Stanton 1</b>      | Tracy Peterson    | Tracy.Peterson@K12.ND.US             | 701-301-3189  |
| <b>Central Cass 17</b>       | Morgan Forness    | morgan.forness@k12.nd.us             | 701-866-2434  |
| <b>Central Valley 3</b>      | Jeremy Brandt     | jeremy.brandt@k12.nd.us              | 701-739-0880  |
| <b>Dakota Prairie 1</b>      | Jay Slade         | jay.slade@k12.nd.us                  | 701-720-9641  |
| <b>Devils Lake 1</b>         | Matt Bakke        | matt.bakke@dlschools.org             | 218-791-2259  |
| <b>Dickinson 1</b>           | Keith Harris      | kharris@dpsnd.org                    | 307-250-8576  |

|                                 |                        |                                    |              |
|---------------------------------|------------------------|------------------------------------|--------------|
| <b>Divide County 1</b>          | Tanja Brown            | tanja.brown@k12.nd.us              | 701-641-0342 |
| <b>Drake 57</b>                 | Steven Heim            | Steven.heim@k12.nd.us              | 701-889-2047 |
| <b>Drayton 19</b>               | Lindsey Pollestad      | lindsay.pollestad@dps19.com        | 701-520-4613 |
| <b>Dunseith 1</b>               | David Sjol             | David.Sjol@k12.nd.us               | 701-771-2043 |
| <b>Earl 18</b>                  | Non operating disrict. |                                    |              |
| <b>Edgeley 3</b>                | Tyler J Hanson         | tyler.hanson1@k12.nd.us            | 701-4932292  |
| <b>Edmore 2</b>                 | Frank Schill           | francis.schill@k12.nd.us           | 701-520-9674 |
| <b>Eight Mile 6</b>             | Matt Schriver          | matt.schrive1@k12.nd.us            | 406-489-1463 |
| <b>Elgin-New Leipzig 49</b>     | Daniel Ludvigson       | daniel.ludvigson@k12.nd.us         | 320-297-0162 |
| <b>Ellendale 40</b>             | Michael Kaiser         | michael.kaiser@ellendale.k12.nd.us | 701-320-8334 |
| <b>Emerado 127</b>              | Mickey Berry           | mickey.berry@emeradok8.com         | 701-367-4861 |
| <b>Enderlin Area 24</b>         | Philip French          | philip.french@k12.nd.us            | 612-360-7523 |
| <b>Fairmount 18</b>             | Brian Nelson           | Brian.Nelson@k12.nd.us             | 701-715-6262 |
| <b>Fargo 1</b>                  | Mackenzie McCormick    | mccormm@fargo.k12.nd.us            | 701-429-7055 |
| <b>Fessenden-Bowdon 25</b>      | D'Aulan Bussman        | daulan.bussman@fessenden.k12.nd.us | 701-391-8637 |
| <b>Finley-Sharon 19</b>         | Jeff Larson            | jeff.larson@finleysharonschool.com | 701-789-0834 |
| <b>Flasher 39</b>               | Alexis Whitehorn       | alexis.whitehorn@k12.nd.us         | 701-269-0707 |
| <b>Fordville-Lankin 5</b>       | Michael J. O'Brien     | michael.obrien@k12.nd.us           | 701-331-2718 |
| <b>Ft Ransom 6</b>              | Benjamin Zahrbock      | benjamin.zahrbock@k12.nd.us        | 320-815-5394 |
| <b>Ft Totten 30</b>             | Jeff Olson             | jeff.olson@k12.nd.us               | 701-230-8366 |
| <b>Ft Yates 4</b>               | Robyn Baker            | robyn.baker@k12.nd.us              | 701-455-0374 |
| <b>Gackle-Streeter 56</b>       | Duke Larson            | duke.larson@k12.nd.us              | 701-485-3692 |
| <b>Garrison 51</b>              | Michelle Fuller        | michelle.fuller@k12.nd.us          | 701-337-6132 |
| <b>Glen Ullin 48</b>            | John Barry             | jbarry@glenullinbearcats.org       | 701-348-3590 |
| <b>Glenburn 26</b>              | Lary Derr              | larry.derr@k12.nd.us               | 701-833-7431 |
| <b>Goodrich 16</b>              | Rodney Scherbenske     | rodney.scherbenske@k12.nd.us       | 701-884-2469 |
| <b>Grafton 3</b>                | Jill Olson             | jill.olson@k12.nd.us               | 701-331-1835 |
| <b>Grand Forks 1</b>            | Terry Brenner          | tbrenner270@mygfschools.org        | 701-740-2237 |
| <b>Grenora 99</b>               | Aaron Rudningen        | aaron.rudningen@gpsd99.org         | 701-301-0096 |
| <b>Griggs County Central 18</b> | Derek Simonsen         | derek.simonsen@k12.nd.us           | 701-535-1361 |

|                                   |                      |                           |              |
|-----------------------------------|----------------------|---------------------------|--------------|
| <b>Halliday 19</b>                | Tony Duletski        | tony.duletski@k12.nd.us   | 701-523-8209 |
| <b>Hankinson 8</b>                | Chad Benson          | chad.benson@k12.nd.us     | 701-640-2603 |
| <b>Harvey 38</b>                  | Dan Stutlien         | daniel.stutlien@k12.nd.us | 701-341-0600 |
| <b>Hatton Eielson 7</b>           | Kevin Rogers         | kevin.rogers@k12.nd.us    | 701-830-0611 |
| <b>Hazelton-Moffit-Braddock 6</b> | Tracy Hanzal         | tracy.hanzal@k12.nd.us    | 701-425-4162 |
| <b>Hazen 3</b>                    | Ken Miller           | ken.miller@k12.nd.us      | 701-269-0049 |
| <b>Hebron 13</b>                  | Myron Schaff         | myron.schaff@k12.nd.us    | 701-878-4442 |
| <b>Hettinger 13</b>               | Darin Seamands       | darin.seamands@k12.nd.us  | 701-928-0391 |
| <b>Hillsboro 9</b>                | Paula Suda           | Paula.Suda@k12.nd.us      | 701-430-0518 |
| <b>Hope Page 85</b>               | Brad Callender       | brad.callender@k12.nd.us  | 701-668-2520 |
| <b>Horse Creek 32</b>             | Carol Kieson         | ckieson@co.mckenzie.nd.us | 701-421-0709 |
| <b>Jamestown 1</b>                | Robert Lech          | robert.lech@k12.nd.us     | 701-870-2636 |
| <b>Kenmare 28</b>                 | Tim Godfrey          | Tim.Godfrey@k12.nd.us     | 907-317-2289 |
| <b>Kensal 19</b>                  | Matt Lokemoen        | matt.lokemoen@k12.nd.us   | 701-368-1478 |
| <b>Kidder County 1</b>            | Rick Diegel          | Rick.Diegel@k12.nd.us     | 701-320-5659 |
| <b>Killdeer 16</b>                | Holly Schmidt        | Holly.schmidt@k12.nd.us   | 701-290-8724 |
| <b>Kindred 2</b>                  | Steven Hall          | steve.hall@k12.nd.us      | 701-866-0748 |
| <b>Kulm 7</b>                     | Tami Kramlich        | tami.kramlich@k12.nd.us   | 701-830-0069 |
| <b>Lakota 66</b>                  | Kevin Baumgarn       | kevin.baumgarn@k12.nd.us  | 701-247-2992 |
| <b>LaMoure 8</b>                  | Mitch Carlson        | mitch.carlson@k12.nd.us   | 701-320-3371 |
| <b>Larimore 44</b>                | Steve Swiontek       | steve.swiontek@k12.nd.us  | 701-739-8900 |
| <b>Langdon</b>                    | Todd Hetler          | Todd.Hetler1@k12.nd.us    | 701-840-7305 |
| <b>Leeds 6</b>                    | Robyn Eberle         | robyn.eberle@k12.nd.us    | 763-486-0283 |
| <b>Lewis and Clark 161</b>        | Marc Ritteman        | marc.ritteman1@k12.nd.us  | 701-540-7431 |
| <b>Lidgerwood 28</b>              | Chris Bastian        | chris.bastian@k12.nd.us   | 701-640-0598 |
| <b>Linton 36</b>                  | Paul Keeney          | paul.keeney@k12.nd.us     | 701-471-9560 |
| <b>Lisbon 19</b>                  | Steven Johnson       | Steven.Johnson@k12.nd.us  | 701-678-3099 |
| <b>Litchville-Marion 46</b>       | Thomas Nitschke      | thomas.nitschke@k12.nd.us | 605-490-2022 |
| <b>Little Heart 4</b>             | Jennifer Vetter      | jennifer.vetter@k12.nd.us | 701-426-4185 |
| <b>Lone Tree 6</b>                | Dr. Timothy W. Tharp | tim.tharp@k12.nd.us       | 406-788-3168 |

|                                   |                    |                                     |              |
|-----------------------------------|--------------------|-------------------------------------|--------------|
| <b>Maddock 9</b>                  | Jennifer Sundby    | Jennifer.Sundby@k12.nd.us           | 701-651-0231 |
| <b>Mandan 1</b>                   | Mike Bitz          | mike.bitz@msd1.org                  | 701-751-6500 |
| <b>Mandaree 36</b>                | Tara Thomas        | tara.thomas1@k12.nd.us              | 701-421-2880 |
| <b>Manning 45</b>                 | Heide Schmaltz     | heide.schmaltz@k12.nd.us            | 701-426-2363 |
| <b>Manvel 125</b>                 | Dave Wheeler       | dave.wheeler@manvelk8.com           | 218-7919962  |
| <b>Maple Valley 4</b>             | Pat Windish        | pat.windish@k12.nd.us               | 701-7492570  |
| <b>Mapleton 7</b>                 | Jenna Farkas       | jenna.farkas@mapletonfalcons.org    | 701-8663204  |
| <b>Marmarth 12</b>                | Joe Royal -McKeown | joe.mckeown@k12.nd.us               | 701-279-7160 |
| <b>Max 50</b>                     | Trent Sherven      | trent.sherven@k12.nd.us             | 701-679-2685 |
| <b>May-Port CG 14</b>             | Michael K. Bradner | michael.bradner@may-portcg.com      | 701-788-2281 |
| <b>McClusky 19</b>                | Sarah Beck         | sarah.beck@k12.nd.us                | 801-644-0252 |
| <b>McKenzie Co 1</b>              | Steve Holen        | sholen@watford-city.k12.nd.us       | 701-570-0025 |
| <b>Medina 3</b>                   | Damon Bosche       | Damon.Bosche@k12.nd.us              | 701-320-5944 |
| <b>Menoken 33</b>                 | Mandy Zabel        | thezabels@gmail.com                 | 701-220-9687 |
| <b>Midkota 7</b>                  | Sara Bilden        | Sara.bilden@k12.nd.us               | 701-330-3499 |
| <b>Midway 128</b>                 | Jason Keating      | Jason.keating@k12.nd.us             | 701-866-1170 |
| <b>Milnor 2</b>                   | Chris Larson       | chris.larson@k12.nd.us              | 701-238-4502 |
| <b>Minnewaukan 5</b>              | Jean Callahan      | jean.callahan@k12.nd.us             | 701-426-5947 |
| <b>Minot 1</b>                    | Mark Vollmer       | mark.vollmer@minot.k12.nd.us        | 701-500-9833 |
| <b>Minto 20</b>                   | Linda Lutovsky     | linda.lutovsky@mintoschools.com     | 701-248-3479 |
| <b>Mohall-Lansford-Sherwood 1</b> | Keith Campbell     | keith.campbell@k12.nd.us            | 406-679-3945 |
| <b>Montpelier 14</b>              | Jerry Waagen       | jerry.waagen@k12.nd.us              | 701-489-3348 |
| <b>Mott-Regent 1</b>              | William Thibault   | Willie.Thibault@k12.nd.us           | 406-939-0238 |
| <b>Mt Pleasant 4</b>              | Brad Nash          | brad.nash@k12.nd.us                 | 218-242-5887 |
| <b>Munich 19</b>                  | Robert Bubach      | robert.bubach@k12.nd.us             | 701-308-0095 |
| <b>Napoleon 2</b>                 | Richard Bjerklie   | richard.bjerklie@napoleon.k12.nd.us | 701-321-1317 |
| <b>Naughton 25</b>                | Kathy Schlabach    | katschlabach@gmail.com              | 701-258-6034 |
| <b>Nedrose 4</b>                  | Matthew Norby      | matt.norby@k12.nd.us                | 701-838-5550 |
| <b>Nesson 2</b>                   | Ben Schafer        | ben.schafer@rayschools.com          | 701-741-3678 |



|                                |                        |                                     |              |
|--------------------------------|------------------------|-------------------------------------|--------------|
| <b>New England 9</b>           | Kelly Koppinger        | kelly.koppinger@k12.nd.us           | 701-690-1660 |
| <b>New Rockford-Sheyenne 2</b> | Jill C. Louters        | jill.louters@k12.nd.us              | 701-947-5036 |
| <b>New Salem-Almont 49</b>     | Brian D Christopherson | brian.christopherson@k12.nd.us      | 701-928-0975 |
| <b>New Town 1</b>              | Beth Zietz             | Beth.Zietz@k12.nd.us                | 218-370-2392 |
| <b>Newburg-United 54</b>       | Jason Kersten          | jason.a.kersten@k12.nd.us           | 701-871-2004 |
| <b>North Border 100</b>        | Brian Wolf             | brian.wolf@k12.nd.us                | 701-403-4462 |
| <b>North Sargent 3</b>         | Dawn Hoeke             | dawn.hoeke@k12.nd.us                | 701-680-3503 |
| <b>North Star 10</b>           | Jeffrey Hagler         | jeffrey.hagler@k12.nd.us            | 701-351-0402 |
| <b>Northern Cass 97</b>        | Cory Steiner           | cory.steiner@northerncassschool.com | 701-893-5087 |
| <b>Northwood 129</b>           | Brittany Ness          | Brittany.Ness@northwoodk12.com      | 701-430-1972 |
| <b>Oakes 41</b>                | Kraig Steinhoff        | kraig.steinhoff@k12.nd.us           | 701-742-3234 |
| <b>Oberon 16</b>               | Samantha Kopseng       | samantha.kopseng@k12.nd.us          | 701-625-1140 |
| <b>Park River Area 8</b>       | Kirk Ham               | kirk.ham@parkriverk12.com           | 701-331-1401 |
| <b>Parshall 3</b>              | Shane Sagert           | Shane.Sagert@parshallps.org         | 701-989-4817 |
| <b>Pingree-Buchanan 10</b>     | Robert Toso            | robert.b.toso@k12.nd.us             | 701-252-5563 |
| <b>Powers Lake 27</b>          | Caren Hoiby            | Caren.l.hoiby@k12.nd.us             | 701-228-8032 |
| <b>Richardton-Taylor 34</b>    | Dr. Kelly D. Peters    | Kelly.Peters@K12.nd.us              | 701-740-9583 |
| <b>Richland 44</b>             | Britney Gandhi         | britney.gandhi@k12.nd.us            | 360-775-0472 |
| <b>Rolette 29</b>              | Wade Sherwin           | wade.sherwin@k12.nd.us              | 701-246-3595 |
| <b>Roosevelt 18</b>            | Cody Miller-Kraft      | cody.millerkraft@k12.nd.us          | 701-400-0843 |
| <b>Rugby 5</b>                 | Michael McNeff         | mike.mcneff@k12.nd.us               | 701-840-2629 |
| <b>Sargent Central 6</b>       | Kylee Roney            | kylee.roney@k12.nd.us               | 701-680-1295 |
| <b>Sawyer 16</b>               | Thomas Warman          | Thomas.Warman@k12.nd.us             | 701-720-9637 |
| <b>Scranton 33</b>             | John Pretzer           | John.Pretzer@k12.nd.us              | 701-275-8266 |
| <b>Selfridge 8</b>             | Kari Wilson            | kari.wilson@k12.nd.us               | 701-226-7956 |
| <b>Solen 3</b>                 | Justin Fryer           | Justin.Fryer@k12.nd.us              | 701-391-6472 |
| <b>South Heart 9</b>           | Calvin Dean            | calvin.dean@k12.nd.us               | 701-590-0682 |
| <b>South Prairie 70</b>        | Wayne Stanley          | wayne.stanley@k12.nd.us             | 701-340-5091 |
| <b>St John 3</b>               | Susan Cain             | susan.cain@k12.nd.us                | 701-278-3443 |
| <b>St Thomas 43</b>            | Kevin Beaudoin         | Kevin.Beaudoin@k12.nd.us            | 701-257-6424 |

|                              |                       |                                      |              |
|------------------------------|-----------------------|--------------------------------------|--------------|
| <b>Stanley 2</b>             | Tim Holte             | tim.holte@k12.nd.us                  | 701-629-1455 |
| <b>Starkweather 44</b>       | Larry M. Volk         | larry.volk@k12.nd.us                 | 701-490-1463 |
| <b>Sterling 35</b>           | Tonya Bauer           | tonya.bauer@k12.nd.us                | 701-527-2554 |
| <b>Strasburg 15</b>          | Gloria Odden          | gloria.odden@k12.nd.us               | 701-202-1407 |
| <b>Surrey 41</b>             | Debbie Hansen         | debbie.hansen@k12.nd.us              | 701-721-6127 |
| <b>Sweet Briar 17</b>        | Mary Mchugh           | mary.mchugh@k12.nd.us                | 701-425-6301 |
| <b>TGU 60</b>                | Erik Sweet            | erik.sweet@k12.nd.us                 | 701-771-7907 |
| <b>Thompson 61</b>           | John Maus             | john.maus@tps-k12.org                | 701-540-8263 |
| <b>Tioga 15</b>              | Carolyn Eide          | carolyn.eide@k12.nd.us               | 605-520-4276 |
| <b>Turtle Lake-Mercer 72</b> | Sheila Schlafmann     | sheila.schlafmann@k12.nd.us          | 757-651-9230 |
| <b>Twin Buttes 37</b>        | Shanye Peirner        | Shanye.Peirner@k12.nd.us             | 701-938-4396 |
| <b>Underwood 8</b>           | Brandt Dick           | brandt.dick@underwoodschool.org      | 701-220-3176 |
| <b>United 7</b>              | Christopher Bachmeier | c.bachmeier@k12.nd.us                | 701-725-4334 |
| <b>Valley City 2</b>         | Joshua Johnson        | Josh.Johnson@k12.nd.us               | 701-490-2825 |
| <b>Valley-Edinburg 118</b>   | Andrew Currie         | andrew.currie@valley-edinburgk12.com | 701-360-3721 |
| <b>Velva 1</b>               | Dave Schoch           | dave.schoch@k12.nd.us                | 701-340-3818 |
| <b>Wahpeton 37</b>           | Rick Jacobson         | rick.jacobson@k12.nd.us              | 701-640-3137 |
| <b>Warwick 29</b>            | Angela Brandt         | Angela.Brandt@k12.nd.us              | 701-351-3919 |
| <b>Washburn 4</b>            | Brad Rinas            | brad.rinas@k12.nd.us                 | 701-462-3221 |
| <b>West Fargo 6</b>          | Beth Slette           | slette@west-fargo.k12.nd.us          | 701-793-6818 |
| <b>Westhope 17</b>           | Martin Bratrud        | Martin.Bratrud@k12.nd.us             | 701-245-6444 |
| <b>White Shield 85</b>       | Kim Whitebull         | kimberly.whitebull@k12.nd.us         | 701-471-4958 |
| <b>Williams County 8</b>     | Dave Goetz            | David.goetz@k12.nd.us                | 701-339-0158 |
| <b>Williston 1</b>           | Lynn Douglas          | lynn.douglas@willistonschools.org    | 701-770-1580 |
| <b>Wilton 1</b>              | Andrew Jordan         | andrew.jordan@k12.nd.us              | 701-734-6331 |
| <b>Wing 28</b>               | Cari Kramer           | Cari.Kramer@k12.nd.us                | 701-934-4752 |
| <b>Wishek 19</b>             | Shawn Kuntz           | shawn.kuntz@k12.nd.us                | 701-452-2995 |
| <b>Wyndmere 42</b>           | Daniel Dalchow        | dan.dalchow@k12.nd.us                | 605-380-8645 |
| <b>Yellowstone 14</b>        | Derek Gackle          | derek.gackle@k12.nd.us               | 406-489-2454 |
| <b>Zeeland 4</b>             | Trudy Fraase Wolf     | Trudy.FraaseWolf@k12.nd.us           | 701-731-0057 |

## Local Public Health POC

| Local Public Health Unit Name:         | Schools Assigned to This Point of Contact  | LPHU Contact Name                          | LPHU Email  | LPHU Phone Number  |
|--|--|--|---|--|
| <b>Bismarck-Burleigh Public Health</b> | Apple Creek School, Bismarck High School, Brentwood Adventist Christian School, Cathedral of the Holy Spirit Elem School, Centennial Elem School ,Century High School, Dakota Adventist Academy, Dorothy Moses Elem School, Grimsrud Elem School, Highland Acres Elem School, Horizon Middle School, Jeannette Myhre Elem School, Legacy High School, Liberty Elem School, Manning School, Martin Luther School, Menoken Elem School, Naughton School, Northridge Elem School, Pioneer Elem School, Prairie Rose Elem School, Rita Murphy Elem School, Robert Place Miller Elem School, Roosevelt Elem School, Shiloh Christian School, Simle Middle School, South Central Alt High School, St Anne Elem School, St Mary's Academy, St Marys Central High School, St Marys Elem School, Sterling Elem School, Sunrise Elem School, Victor Solheim Elem School, Wachter Middle School, Will-Moore Elem School, Wing Public School | Renae Moch<br><br>Backup:<br>Anton Sattler | rmoch@bismarcknd.gov<br><br>asattler@bismarcknd.gov | 701-214-3612 (w)<br>701-426-4561 (c)<br><br>701-220-0156 (w) |
| <b>Cavalier County Health District</b> | Langdon Area Elem School, Langdon Area High School, Munich Public School, St Alphonsus Elem School   | Steph Welsh                                | stwelsh@nd.gov                                      | 701-305-0465   |
| <b>Central Valley Health District</b>  | Gackle-Streeter Public School, Jamestown High School, Jamestown Middle School, Kensal Elem School, Montpelier Public School, Napoleon Public School, Pingree-  | Robin Iszler                               | riszler@nd.gov                                      | 701-252-8130   |

|                                      |  |  |   |   |
|--------------------------------------|--|--|---|---|
|                                      | Buchanan Elem School, Pingree-Buchanan High School, Hillcrest SDA School, St Johns Academy, St Johns Elem School, Medina Public School   |  |   |   |
| <b>City County Health District</b>   | Barnes County North, St. Catherine's, Washington Elementary (VC), Jefferson Elementary (VC), Valley City JR/Sr. High, Maple Valley, Buffalo, Fingal, Oriska, Tower City  | Theresa Will                               | twill@barnescounty.us   | 701-840-8050<br>701-845-2059                |
| <b>Custer Health</b>                 | Beulah Elem School, Beulah High School, Beulah Middle School, Brave Center Academy, Cannon Ball Elem School, Center-Stanton Public School, Christ the King Catholic Montessori School, Custer Elem School, Elgin-New Leipzig Public School, Flasher Public School, Ft Lincoln Elem School, Ft Yates Middle School, Glen Ullin Public School, Hazen Elem School, Hazen High School, Hazen Middle School, Hebron Public School, Lewis and Clark Elem School, Little Heart Elem School, Mandan High School, Mandan Middle School, Mary Stark Elem School, New Salem-Almont High School, Prairie View Elem School, Red Trail Elem School, Roosevelt Elem School, Roosevelt Elem School, Selfridge Public School, Solen High School, St Bernard Mission School, St Josephs Elem School, Standing Rock Comm, Grant High School, Sweet Briar School | Becky Bailey<br><b>24/7</b><br>Erin Ourada | <a href="mailto:rebecca.bailey@custerhealth.com">rebecca.bailey@custerhealth.com</a><br><b>24/7</b><br><a href="mailto:erin.ourada@custerhealth.com">erin.ourada@custerhealth.com</a> | 701-667-3370<br><b>24/7</b><br>701-202-1286 |
| <b>Dickey County Health District</b> | Ellendale Public School, Maple River Elem School, Oakes Elem School, Oakes High School   | Roxanne Holm                               | rholm@nd.gov  | 701-349-4348<br>701-367-3488                |

|                                    |   |                                   |  |                              |
|------------------------------------|---|-----------------------------------|--|------------------------------|
| <b>Emmons County Public Health</b> | Strasburg High School   | DalRae Baumgartner                | drbaumgartner@nd.gov                               | 701-851-0152                 |
|                                    | Linton Public School  | Bev Voller                        | <a href="mailto:bvoller@nd.gov">bvoller@nd.gov</a> | 701-329-0016                 |
|                                    | Hazelton Public School  | Lisa Edholm-Moch                  | ledholmoch@nd.gov                                  | 701-321-2204                 |
| <b>Fargo Cass Public Health</b>    | Ben Franklin Middle School, Bennett Elem School, Carl Ben Eielson Middle School, Centennial Elem School, Central Cass Public School, Cheney Middle School, Clara Barton Hawthorne Elem School, Discovery Middle School, Eagles Elem School, Ed Clapp Elem School, Fargo Davies High School, Hope High School, Horace Mann Roosevelt Elem School, Jefferson Elem School, Kennedy Elem School, Kindred Elem School, Kindred High School, Lewis and Clark Elem School, Lincoln Elem School, Longfellow Elem School, Madison Elem School, Maple Valley Public School, Mapleton Elem School, McKinley Elem School, North High School, Northern Cass Public School, Oak Grove Lutheran Elem School, Oak Grove Lutheran High School, Roosevelt Elem School, South High School, Washington Elem School, West Elem School, West Fargo High School, West Fargo Sheyenne High School, Woodrow Wilson Alt High School | Larry Anenson<br>Suzanne Schaefer | LAnenson@FargoND.gov<br>SSchaefer@FargoND.gov      | 701-241-8575<br>701-241-8193 |

|                                   |  |               |                  |              |
|-----------------------------------|--|---------------|------------------|--------------|
| <b>First District Health Unit</b> | Anamoose Elem School, Bel Air Elem School, Bell Elem School, Berthold Public School, Bishop Ryan Catholic School, Bottineau Elem School, Bottineau Jr-Sr High School, Bowbells Public School, Burke Central Public School, Burlington-Des Lacs Elem School, Central Campus School, Des Lacs-Burlington High School, Drake High School, Erik Ramstad Middle School, Garrison High School, Glenburn Public School, Goodrich Public School, Jim Hill Middle School, John Hoeven Elem School, Kenmare Elem School, Kenmare High School, Lewis and Clark Elem School, Little Flower Elem School, Longfellow Elem School, Magic City Campus High School, Max Public School, McClusky Elem School, McClusky High School, McKinley Elem School, Memorial Middle School, MLS-Mohall Public School, Nedrose Elem School, Nedrose Public School, Newburg-United Public School, North Plains Elem School, Our Redeemer's Christian School, Powers Lake Public School, Roosevelt Elem School, Sawyer Elem School, SonShine Elementary, Souris River Campus Alt High School, South Prairie Public School, Sunnyside Elem School, Surrey Public School, TGU Granville Public School, TGU Towner Public School, Turtle Lake-Mercer Public School, Underwood Public School, Velva Public School, Washburn Public School, Washington Elem School, Westhope Public School, White Shield Public School, Wilton Public School | Holly Brekhus | hibrekhus@nd.gov | 701-721-9110 |
|-----------------------------------|--|---------------|------------------|--------------|

|   |   |  |  |  |
|---|---|--|--|--|
| <b>Foster County Public Health</b>        | Carrington Elem School, Carrington High School, Midkota High School   | Lisa Hilbert   | lhilbert@nd.gov  | 701-652-3087   |
| <b>Grand Forks Public Health</b>          | Ben Franklin Elem School, Central High School, Century Elem School, Community Alt High School, Discovery Elem School, Emerado Elem School, Grand Forks Montessori Academy, Holy Family-St Mary's Elem School, J Nelson Kelly Elem School, Lake Agassiz Elem School, Larimore Elem School, Larimore High School, Lewis and Clark Elem School, Manvel Elem School, Midway Public School, Nathan Twining Elem-Middle School, New Testament Baptist Christian School, Northwood Public School, Phoenix Elem School, Red River High School, Schroeder Middle School, South Middle School, St Michaels Elem School, Thompson Public School, Valley Middle School, Viking Elem School, West Elem School, Wilder Elem School, Winship Elem School | Theresa Knox<br>Allen Anderson<br><br>Daniell Gratton<br><br>Sarah Odegard | tknox@grandforksgov.com<br>aanderson@grandforksgov.com<br><br>Email?<br><br>Email? | 701-330-6348<br>701-330-5774<br><br>701-215-2780<br><br>218-791-4621 |
| <b>Kidder County District Health Unit</b> | Steele-Dawson Public School   | Tricia Steinke   | pbisch-steinke@nd.gov  | 608-289-2464 (c)<br>701-475-2582 (w)                                 |
| <b>Lake Region District Health Unit</b>   | Devils Lake High School, Edmore Public School, Minnie H Kindergarten Center, ND School for the Deaf, Prairie View Elem School, St Joseph Elem School, Starkweather Public School  | Annette Groves, RN,<br>DON   | agroves@nd.gov   | 701-662-7036   |
| <b>Lake Region District Health Unit</b>   | Little Flower Elem School, Rugby Ely Elem School, Rugby High School   | Samantha Wentz   | skwentz@nd.gov   | 701-776-6783   |
| <b>Lake Region District Health Unit</b>   | Leeds Public School, Maddock Public School, Minnewaukan Public School   | Shelley Aabrekke   | saabrekke@nd.gov   | 701-351-1513   |
| <b>LaMoure County Health Department</b>   | Edgeley Public School, Kulm Public School, LaMoure Colony School, LaMoure Public  | Jessica Duffy  | jduffy@nd.gov  | 701-210-2542   |

|  |   |                      |                                  |                                      |
|--|---|----------------------|----------------------------------|--------------------------------------|
|  | School, Litchville-Marion High School, Willow Bank Colony School  |                      |                                  |                                      |
| <b>Nelson-Griggs</b>                         | Midkota Elem School, Griggs County Central, Dakota Praire Elementary, Dakota Praire HS, Lakota Elementary, Lakota HS  | Julie Ferry MS, RN   | jferry@nd.gov                    | 701-322-5624                         |
| <b>Pembina County Public Health</b>          | Cavalier Public School, Drayton Public School, North Border-Pembina Public School, North Border-Walhalla Public School, St Thomas Public School, Valley-Edinburg Elem School-Crystal  | Julie Hardy RN       | Juhardy@nd.gov                   | 701-520-9207                         |
| <b>Ransom County Public Health</b>           | Enderlin Area Public School, Ft Ransom Elem School, Lisbon Elem School, Lisbon High School, Lisbon Middle School  | Chelsey Jones        | chelsey.jones@co.ransom.nd.us    | 701-683-6140 (w)<br>701-371-3527 (c) |
| <b>Richland County Health Department</b>     | Fairmount Public School, Hankinson Public School, Lidgerwood Public School, Richland Elem School, Richland Jr-Sr High School, St Johns Elem School, Wahpeton Elem School, Wahpeton High School, Wyndmere Public School, Zimmerman Elem School | Michelle Eberhardt   | meberhardt@co.richland.nd.us     | 701-899-0890                         |
| <b>Rolette County Public Health District</b> | Dunseith Elem School, Dunseith High School, Mt Pleasant Public School, Rolette Public School, St John Public School   | Sara Hendrickson, RN | shendrickson@nd.gov              | 701-477-5646<br>701-953-8040         |
| <b>Sargent County District Health Unit</b>   | Milnor Public School, North Sargent Public School, Sargent Central Public School  | Brenda K Peterson    | brenda.peterson@co.sargent.nd.us | 701-680-2040                         |



|  |   |                 |                              |              |
|--|---|-----------------|------------------------------|--------------|
| <b>Southwestern District Health Unit</b>   | Belfield Public School, Bowman Co Public School, DeMores Elem School, Dickinson High School, Dickinson Middle School, Golva Elem School, Heart River Elem School, Hettinger Public School, Hope Christian Academy, Jefferson Elem School, Jefferson Elem School, Killdeer Public School, Lincoln Elem School, Marmarth Elem School, Mott-Regent Public School, Prairie Rose Elem School, Rhame Elem School, Richardton-Taylor Public School, Roosevelt Elem School, Scranton Public School, South Heart Public School, Taylor-Richardton Elem School, Trinity Elem East School, Trinity Elem North School, Trinity Elem West School, Trinity High School, Twin Buttes Elem School | Sherry Adams    | sladams@nd.gov               | 701-290-6110 |
| <b>Steele County Public Health</b>         | Finley-Sharon Public School, Hope High School   | Courtney Tangen | cotangen@nd.gov              | 701-524-2060 |
| <b>Towner County Public Health</b>         | North Star Public School  | Jessica Larson  | jessica.smaaladen@my.und.edu | 701-739-4228 |
| <b>Traill District Health Unit</b>         | May-Port CG, Hatton School, Central Valley School, Hillsboro School   | Brenda Stallman | bstallman@co.trail.nd.us     | 701-636-4435 |
| <b>Upper Missouri District Health Unit</b> | Alexander Public School, Bakken Elem School, Central Elem School, Divide County Elem School, Divide County High School, East Fairview Elem School, Grenora Public School, Hagan Elem School, Horse Creek School, Johnson Corners Christian Academy, Lewis and Clark Elem School, Mandaree Public School, McVay Elem School, North Shore Plaza Public School, Parshall Elem School, Parshall High School, Ray Public School, Rickard Elem School, Round Prairie Elem School, St Josephs Elem School,   | Daphne Clark    | dclark@umdhu.org             | 701-570-0266 |

|  |  |  |  |   |
|--|--|--|--|---|
|  | Stanley Elem School, Stanley High School, Tioga High School, Trinity Elem School, Trinity High School, Watford City Elem School, Watford City High School, Watford City Middle School, Wilkinson Elem School, Williston High School, Williston Middle School, Williston Trinity Christian School |  |  |   |
| <b>Walsh County Health District</b>      | Century Elem School, Fordville-Lankin Public School, Grafton High School, Grafton Junior High School, Minto Public School, Park River Area Public School, Valley-Edinburg High School  | Carly Ostenrude<br><b>24/7</b><br>Wanda Kratochvil | <a href="mailto:costenrude@nd.gov">costenrude@nd.gov</a><br><b>24/7</b><br>wkratoch@nd.gov | 701-352-5139<br><b>24/7</b><br>701-331-1047 |
| <b>Wells County District Health Unit</b> | B M Hanson Elem School, Harvey High School,  | Caitlyn Roemmich                                   | cmroemmich@nd.gov  | 701-381-2032                                |
| <b>Wells County District Health Unit</b> | Fessenden-Bowdon Public School   | Kelly Wright                                       | klwright@nd.gov  | 701-989-5228                                |

## Supporting Resources

### DOH

For a complete updated list of school related resources visit <https://www.health.nd.gov/child-careschoolsuniversities>.

- [Recommendations for Schools](#)
- [Close Contacts in School Settings](#)
- [School Attendance Decision Tree for Parents](#)
- [NDDoH Recommendations for Sports](#)
- [NDDoH Recommendations for Performing Arts](#)
- [COVID-19 Screening for Employees](#)
- [Infectious Disease Guide](#)
- [Physical Distancing, Quarantine, and Isolation:What's the Difference?](#)
- [Video: Questions Relating to Schools](#) (ND School Nurse Organization)
- Mitigation Strategies (link coming)
- [FAQ](#)
- Templates for Schools
  - [Close Contact Sample Letter](#)
  - [Not a Close Contact Sample Letter](#)

### DPI

For a complete updated list of school related resources visit <https://www.nd.gov/dpi/familiescommunity/nddpi-updates-and-guidance-covid-19/nd-k12-smart-restart-guidance>.

- [Smart Restart Guidelines](#)
- [FAQ](#)